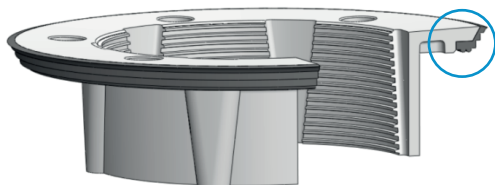


# TILEABLE TRAY SYSTEMS

# INSTALLATION INSTRUCTIONS

**The AquaKnight Waste Systems 'Tile Tray Waste' requires no sealant for installation.**

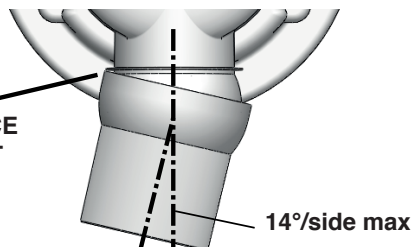
The use of sealants on the clamp ring area may impair the performance of your waste and **WILL VOID WARRANTY.**



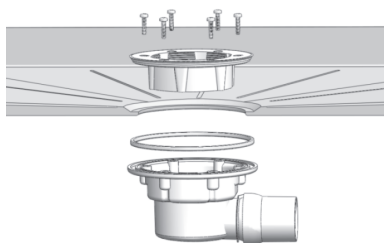
## DO NOT USE SILICONE/ SEALANT

The Clamp Ring has been designed with a specially over-moulded flexible rubber seal that has been designed in conjunction with your Tile Tray manufacturer to be a precise fit and eliminate any potential for leaks due to variations in sealants & sealant application.

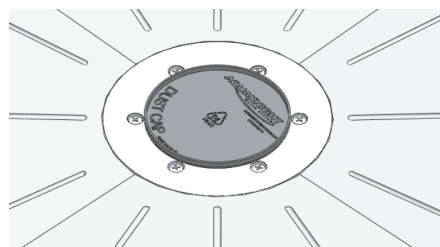
**DO NOT FORCE  
SOCKET PAST  
THE STOP**



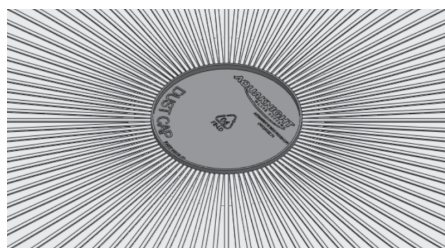
The Swivel Socket rotates 14°/side & downwards. **Do not force the socket past the factory fitted stop** as this may compromise the integrity of the fitting.



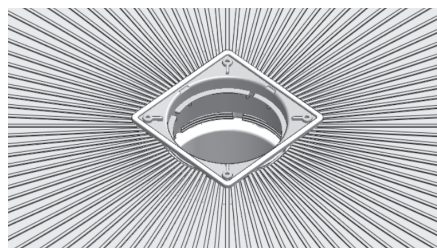
**1.** Fit Body Assembly to underside of Tile Tray making sure Fixture Seal is seated correctly. Fit Clamp Ring to top side of tray & hand tighten. Check Fixture Seal is properly positioned on the underside of Tile Tray before tightening further.



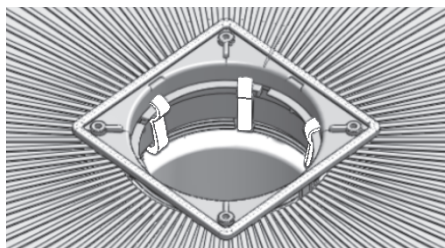
**2.** Tighten Clamp Ring Screws in a Wheel-Nut sequence in 3 stages: 1) 1Nm, 2) 1.5Nm, 3) 2Nm... firm but not over-tight. Tightening screws further **WILL VOID WARRANTY.** Install Dust Cap.



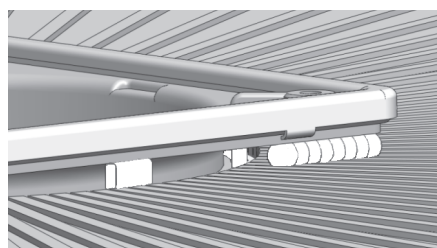
**3.** Apply Thin Set up to edge of Dust Cap radiating out from the centre of waste. Take care to work Thin Set into Clamp Ring Screw heads and remove any trapped air. Remove Dust Cap.



**4.** Screw in Tiling Flange to required height to match Tile thickness. Tiles should sit flush with the top face of Tiling Flange when installed.



**5.** Install Clips into sub-tile drainage ports.



**ENSURE THIN-SET DOES NOT ENTER SUB-TILE DRAINAGE PORTS (OBSCURED)**

**6.** Pack corners of Tiling Flange with Thin-Set to support. Lay Tiles & grout to standard practice.

**REMOVE CLIPS BEFORE THINSET CURES**

## AQUAKNIGHT INDUSTRIES LTD

PO Box 41-049, Mt Roskill, Auckland 1041, New Zealand

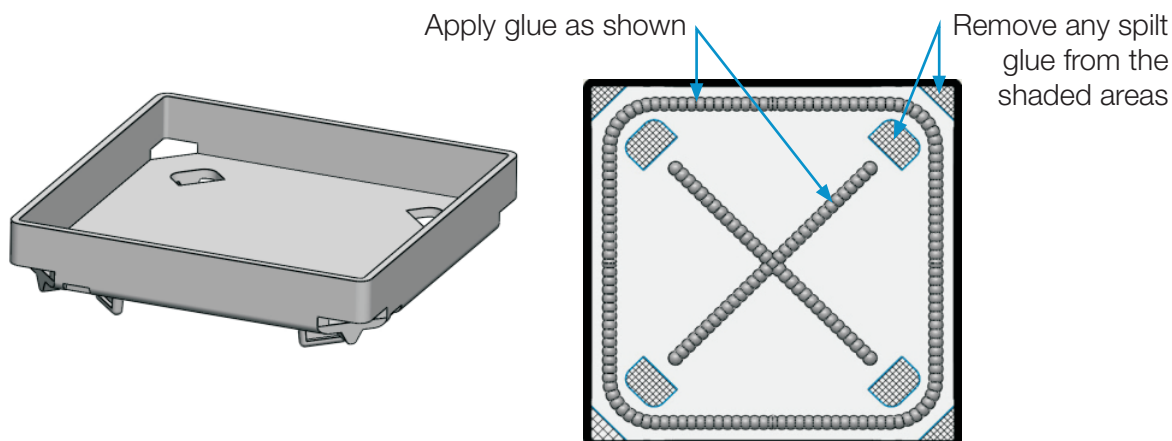
Phone: +64 9 832 2214 | sales@aquaknight.co.nz | [www.aquaknight.co.nz](http://www.aquaknight.co.nz)

© AquaKnight Industries Ltd 2020



**IMPORTANT!**

WHEN GLUING THE DECORATIVE INSERT INTO PLACE:



The AquaKnight Industries Waste systems require periodic cleaning in order to remove any hair, soap, body fat or debris which may accumulate over the course of normal operation. Left unattended this build-up may eventually restrict flow.

**DO NOT USE ABRASIVE CLEANERS.**  
**DO NOT USE SOLVENT BASED CLEANING PRODUCTS.**

There are some cleaners the use of which will void all warranty as they are not suitable for use on A.B.S. and P.V.C. Plastics. Substances such as: Acetone, Toluene, Aniline, Ethylene Chloride, Ethylene Acetate, Chlorine based cleaners, Diethyl Ether, Methyl Alcohol, Isopropyl Alcohol and any other organic solvents **MUST NEVER BE USED OR ALL WARRANTIES EXPRESSED OR IMPLIED WILL BE VOID.** This includes any cleaning systems or adhesive systems that contain strong solvents.

**RECOMMENDATIONS**

It is recommended after each shower to wipe or wash the walls, tray and waste to prevent the accumulation of soap residues. It is highly recommended that regular cleaning is maintained to prevent the build-up of grime and body fats. This can be achieved by simply using soap and water or any mild domestic detergents available.

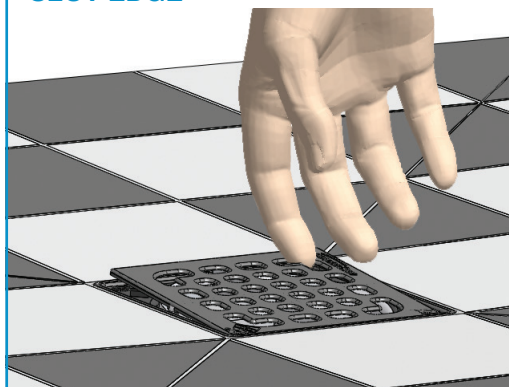
**RESIDENTIAL**

It is recommended that for an average family of 5 showering daily the Waste should be cleaned weekly. This may vary due to the amount of hair loss by each user.

**COMMERCIAL**

It is recommended that for areas of high use (5+ showers per day, by users with longer than average hair and/or by those experiencing advanced hair loss) cleaning be performed daily.

**REMOVE STRAINER ASSEMBLY BY GENTLY LIFTING UNDER CORNER SLOT EDGE**



**WaterMark**  
 ATS 5200.040-2005  
 Lic.21417