

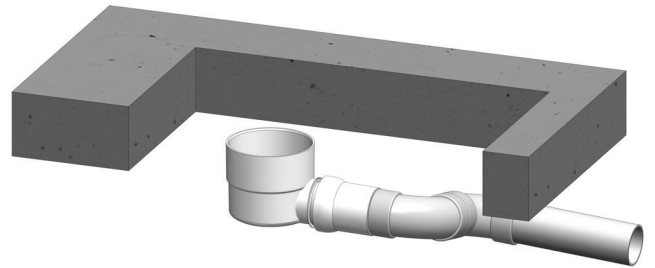
Product Set-Up & Installation for Ground Slabs

PLUMBER

Slab is boxed out to expose piping. Pipes can be roughed into corner of boxing (Remove Boxing)

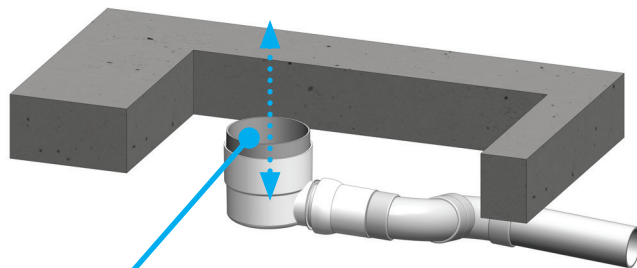


Elbows & piping are used to establish waste location



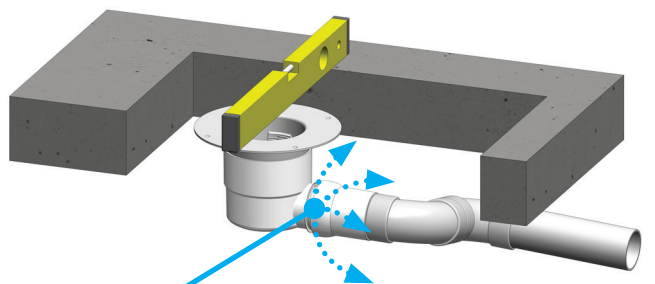
TILER

Trim DWV100 to desired height



Height of Flange is achieved by trimming the DWV100 supplied

Install Liquid Membrane Flange & set location, height & levels by adjustment of swivel socket

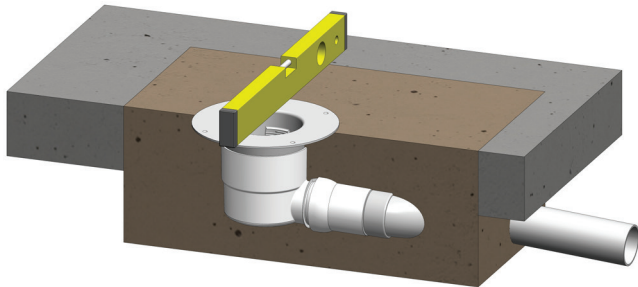


Final position & level of Flange is achieved by adjustment of Swivel Outlet

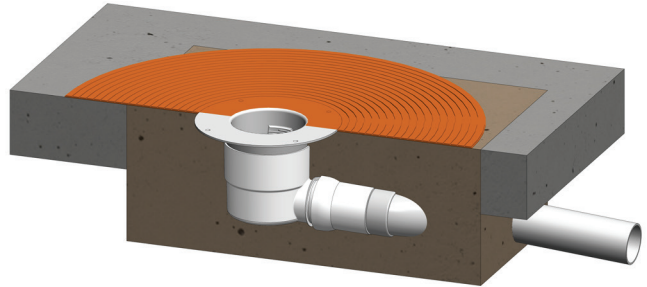


Product Set-Up & Installation for Ground Slabs

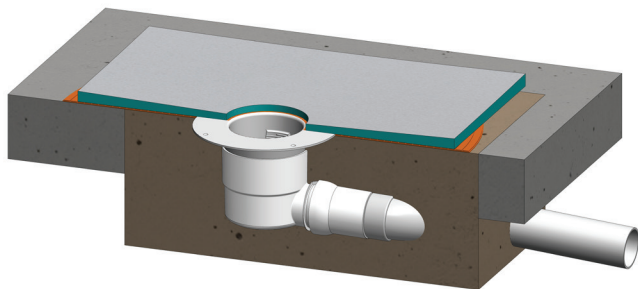
Back-Fill cavity, checking levels & location



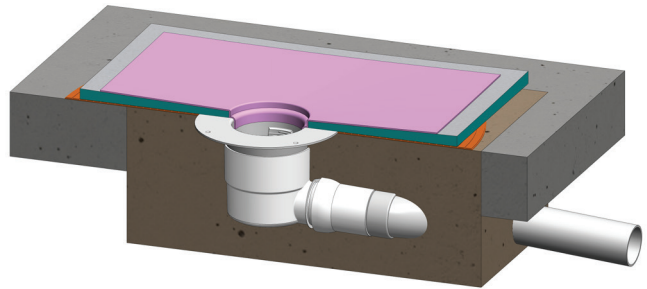
Apply adhesive to Floor



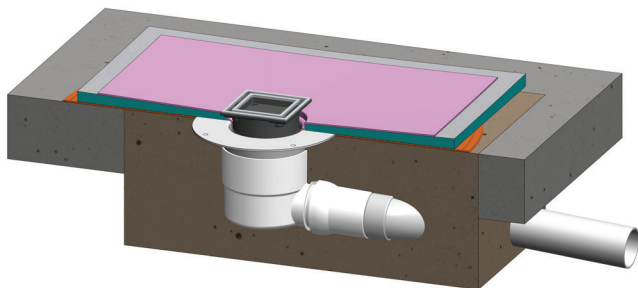
Install the Pre-Formed Taper Board



Approved Waterproof Membrane must be detailed down into the throat of Liquid Membrane Flange to the top of Threads



Screw down the Tiling Flange Assembly to finished Tile Height -1mm



Tile & Grout to standard practice

