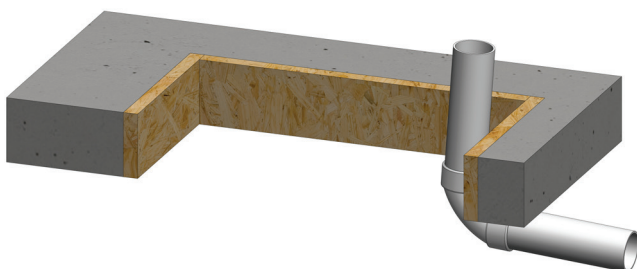


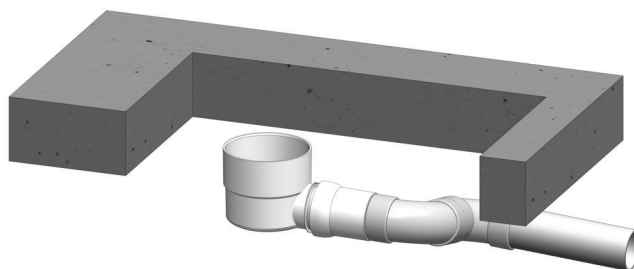
## **Product Set-Up & Installation for Ground Slabs**

### **PLUMBER**

Slab is boxed out to expose piping. Pipes can be roughed into corner of boxing (Remove Boxing)

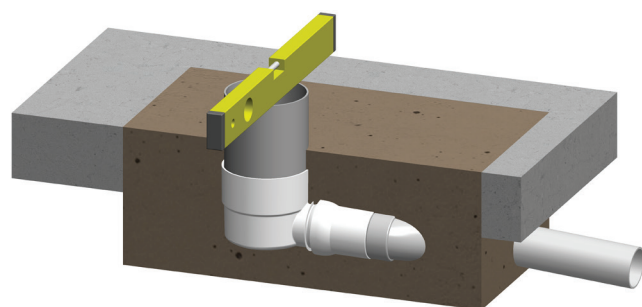


Elbows & piping are used to establish waste location

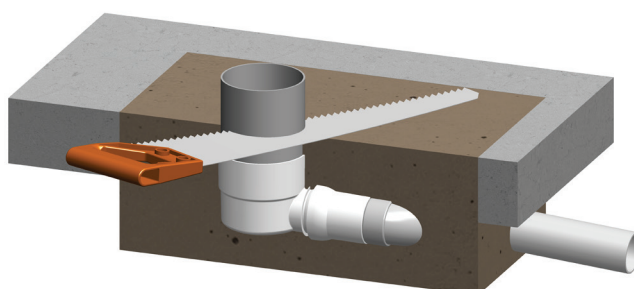


### **TILER**

Install DWV100 extension & back-fill cavity, checking levels

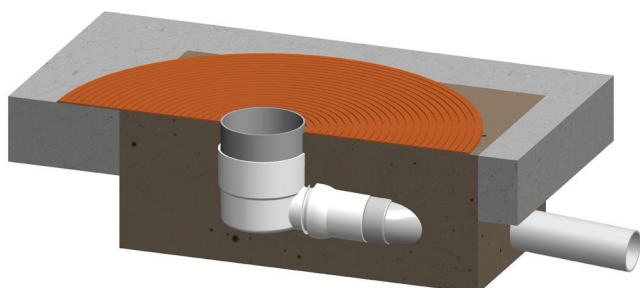


Trim DWV100 extension to desired height

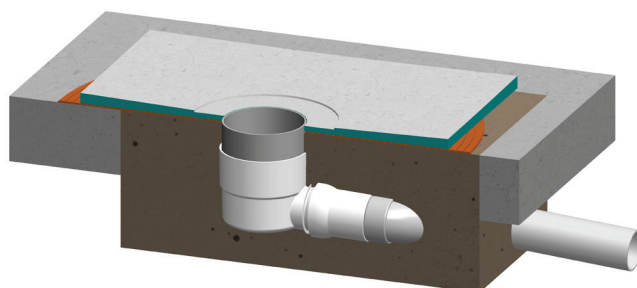


## Product Set-Up & Installation for Ground Slabs

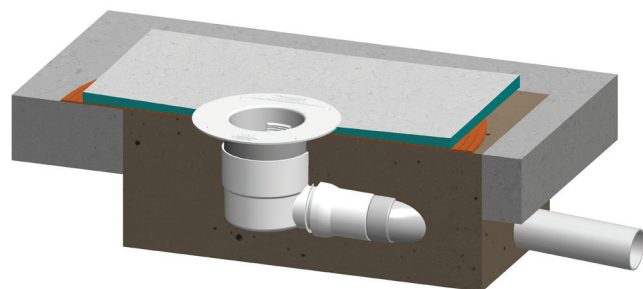
Apply adhesive to Floor



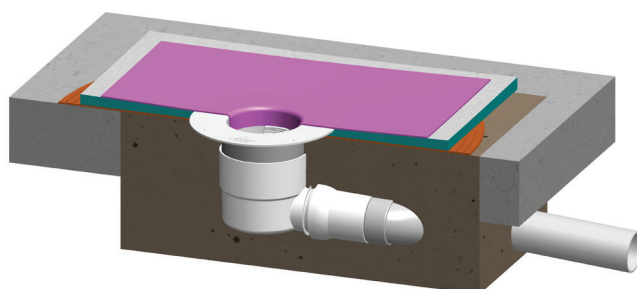
Install the Pre-Formed Taper Board



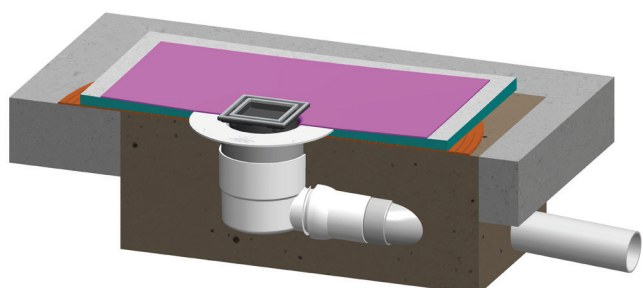
Install Liquid Membrane Flange into DWV100 and seal to Pre-Formed Taper Board



Approved Waterproof Membrane must be detailed down into the throat of Liquid Membrane Flange to the top of Threads



Screw down the Tiling Flange Assembly to finished Tile Height -1mm



Tile & Grout to standard practice

